

The Museum of the American Railroad is reaching out with an opportunity

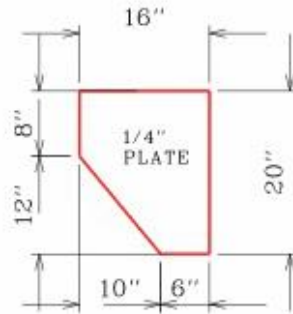
to enrich our
museum &
enhance its
impact on our
community



We envision a new events pavilion -

a versatile space
that will
showcase our
remarkable
collection and
serve as a venue
for events &
gatherings





CORNER GUSSET DETAIL
PROVIDE 2B AS SHOWN

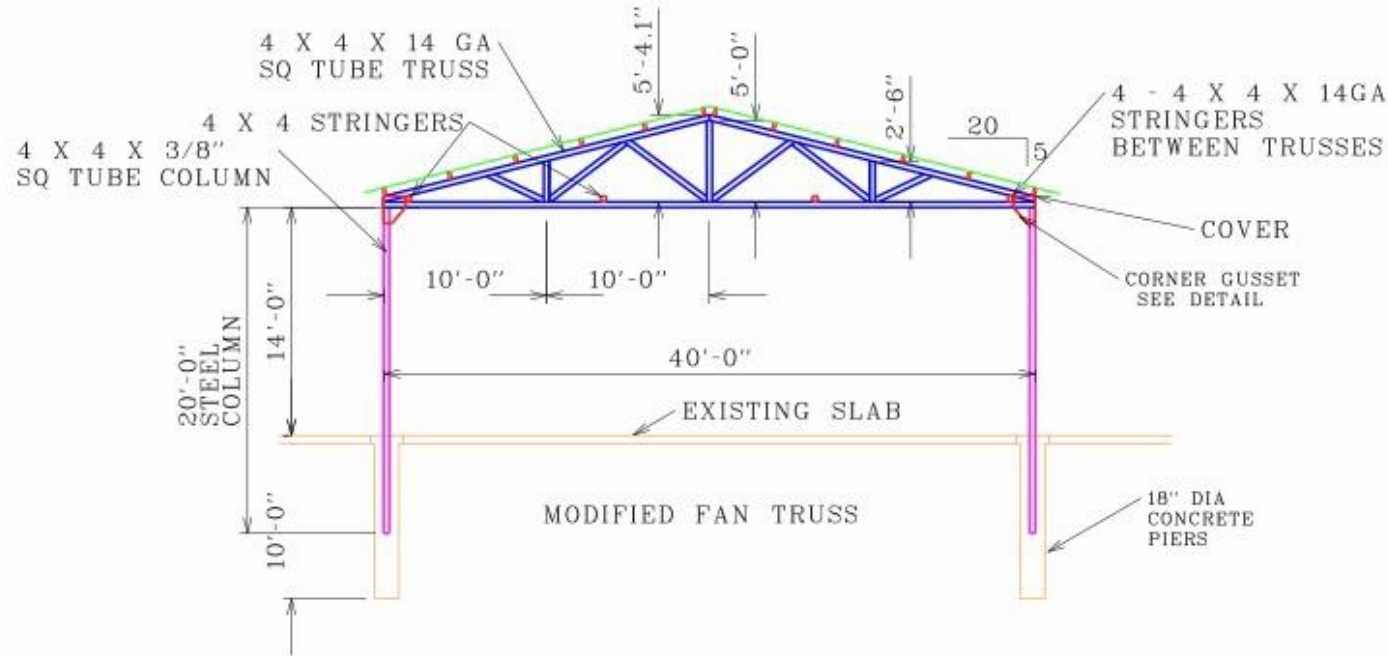
CANOPY IS 40 FEET WIDE AND 120 FEET LONG WITH TRUSSES ON 20 FOOT CENTERS

14 TRUSSES ARE 4 INCH BY 4 INCH BY 14 GAUGE METAL SQUARE TUBING.
ALL WELDS TO BE SOLID FILLET WELDS ON ALL AVAILABLE SURFACES.
14 COLUMNS ARE 4 INCH BY 4 INCH BY 3/8 INCH SQUARE TUBING.
PROVIDE GUSSET PLATES AS INDICATED ON ALL TRUSS TO COLUMN CONNECTIONS ON BOTH SIDES OF COLUMNS.
PROVIDE 4 STRINGERS OF 4 INCH BY 4 INCH 14 GA. TUBING BETWEEN TRUSSES AS INDICATED.
SHEET METAL ROOFING WITH 2 IN. BY 6 IN. PURLINS ON 4FT CENTERS.

CUT 24" BY 24" HOLES IN EXISTING CONCRETE FOR POST BASE INSTALLATION.
DO NOT OVERCUT THE HOLES WITH THE SAW BEYOND THE 24 INCH DIMENSION.
DRILL 18 INCH DIAMETER PIERS TO 10 FEET.
PLACE COLUMN STEEL 6 FEET INTO PIER CONCRETE.
INSTALL 6 #3 REBAR VERTICALLY IN PIER HOLES WITH #3 BANDS AT 18 INCHES ON CENTER.
DRILL 3 - #3 DOWELS INTO EACH FACE OF THE CONCRETE CUTOUT.
EPOXY THE DOWELS INTO THE EXISTING CONCRETE.
WELD OR TIE THE COLUMNS TO THE REBAR DOWELS.
REPOUR PIER AND SLAB WITH 3500 PSI CONCRETE.

PROVIDE GROUNDING RODS AND CONNECTIONS AT EACH END OF STRUCTURE FOR GROUNDING.

PAINT ALL STEEL SURFACES WITH RUST PREVENTATIVE PAINT.



11' X 17" SHEET SIZE



LINGLE ENGINEERS

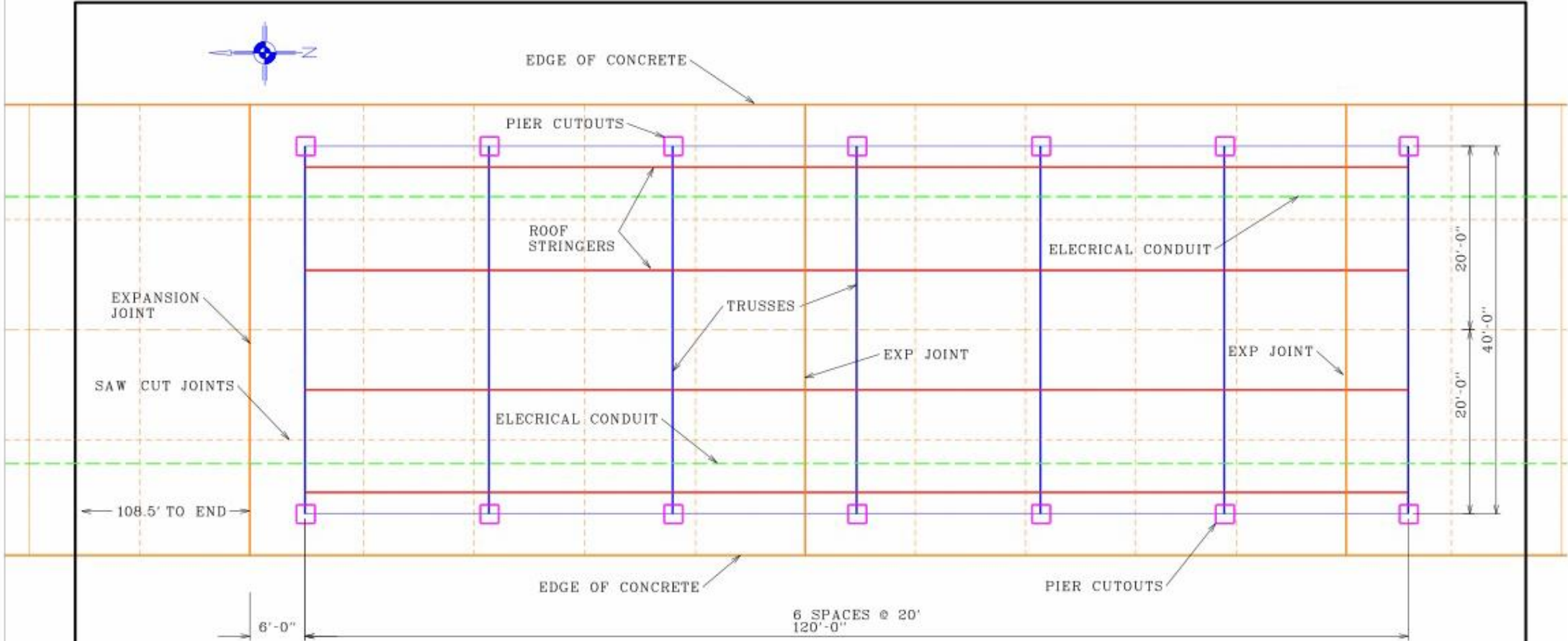
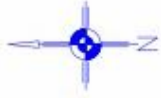
Division of Lingle Corporation
Texas Reg. No. F-1385
Civil-Structural Engineers
Planners/Designers
Construction Managers

7001 Westchester Court, Suite 200
McKinney, TX 75072 214-544-9000


**TRUSS SECTION
CANOPY PLAN**

Scale: 1/8" = 1' Date: 5/28/2023
Project Number: 3620 C - 2

MUSEUM OF THE AMERICAN RAILROAD
FRISCO, TEXAS



MUSEUM OF THE AMERICAN RAILROAD
FRISCO, TEXAS

	LINGLE ENGINEERS <small>Division of Lingle Corporation Texas Regis No. F-1385</small>
	<small>Civil-Structural Engineers Planners/Designers Construction Managers</small>
<small>7001 Westchester Court, Suite 200 McKinney, TX 75072 214-544-9000</small>	
NEW CANOPY LAYOUT	
Scale: 1" = 10' Date: 5/28/2023 Project Number: 3620 C - 1	

A new **events pavilion** will be a dynamic space where students, families, friends, and neighbors can come together to learn, connect, and celebrate!

40 ft. x 120 ft.

All-Steel Construction with Open
Trusses at Ends

Pavilion Cost: \$76,000

Electrical Service: \$24,000

Total Funds Needed: \$100,000

Naming Opportunity Available

